

**Motor GM37-520-6000-67-21D** Art.-Nr.: 860531

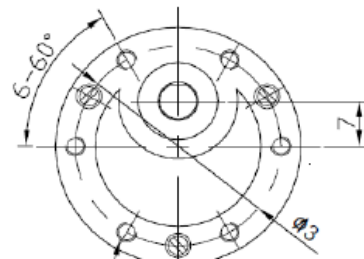
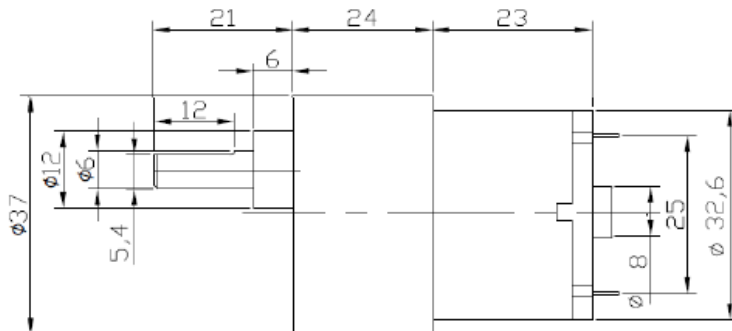
**Specification :**

Item	Unit	Specification
Rated voltage	V <sub>DC</sub>	12.0
Gear Ratio		1/67
Rotation		CCW
Motor Position		All position in horizontal
Temperature	°C	0~30
Humidity	%	30~95
<b>• Performance of Motor</b>		
No-load Speed	rpm	6.000±10%
No-load Current	mA	55 (max.)
Stall Current	mA	1650 (max.)
Stall Torque	g.cm	190
<b>• Performance of Gear motor</b>		
Output Speed	rpm	70±10%
No-load Current	mA	70 (max.)
Stall Current	mA	1650 (max.)
Stall Torque	kg.cm	15.0
Rated Torque	g.cm	3000
Rated Current	mA	270 (max.)
Noise	dB	52
<b>• The Dimension</b>		
The Outside Shaft Length	mm	21
Shaft End Play	mm	0.05-0.50
Screw Size		M3 (allowed the depth 3mm)
Dia of Shaft	mm	Ø6-D12mm

**Motor GM37-520-6000-67-21D** Art.-Nr.: 860531

**Dimensions :**

(Unit : mm)



ISDM3:0×3 TAPPED  
HOLE 6 PLACES  
UNIT: MILLIMETRE(mm)

**Curve Drawings :**

